

Power Supplies / Control Units

ilcon ICS3 control system

Fields of application

Ilcon's newly developed microcontroller-system for applications with highest requirements and performance. The control system can be programmed and customized for various demands such as speed, custom actuator positions, collision detection, actuator presence detection, custom locking functions, soft-start and -stop functions and multiple i/o channels. Monitoring more than 100 parameters simultaneously this system offers highest safety features for all medical devices.

Fully certified to IEC 60601-1.

ilcon
LINEAR ACTUATOR CONCEPTS



Standard model

- SMPS Main Power supply 115V – 240V AC 50/60Hz
- Standard and PRO models
- 200W or 400W SMPS
- Standby Power < 0,3W
- Main Power plugs in several country variants separate available
- Microcontroller system
- Communication system via ilcoBus®
- Customizing function via parameter settings
- Duty-cycle control via power calculation
- End-User Memory position storage options
- Safety Area for height adjustment in order to prevent damage to the bed's frame
- Light for error signals and illumination
- Cascadable up to four ilcoPower for high load Table or double bed
- 4 Actuator channels with synchronization function
- Additional actuators/lamps/controllers with ilcoLink unit
- Actuator plug detection
- Overload Self protection
- Speed regulation
- Soft-Start and Soft-Stop functions
- ilcoEnergy – 1,2 Ah Valve regulated lead acid (VRLA) battery
- Housing from flame resistant (V0) polymer
- IP66 dust and water resistant
- IEC 60601-1

Recommended system modules

- ilcoGate - PC USB Dongle
- ilcoControl IP Handset - (Various options)
- ilcoControl Nurse Control - (Various options)
- ilcoEnergy - Battery Backup with intelligent charging and communication via ilcoBus
- ilcoLink - Control Unit for customizing functions (Various options)
- ilcoFree X - cuts the line voltage when the application is not in use and reduce standby power
- ilcoStop - Emergency stop switch
- ilcoDrive IZ, OZ, HZ
- ilcoService-Tool - PC communication software

ilcon GmbH
Linear Actuator Concepts
Hertzstr. 1-3
27318 Hoya
Germany

Phone +49 4251 816610-10
www.ilcon.com
info@ilcon.com

ilcon Actuator Corp.
Linear Actuator Concepts
11511 James Street
Holland, MI 49424
USA

Phone (616) 796-3235
www.ilcon.com
info@ilcon.com

For more detailed data sheets, please contact our Sales Department. We would be pleased to provide a documentation according to your product specifications. Mistakes and printing errors excepted. If you have any questions, please do not hesitate to contact us.
Dated: 06/2017

ilcoPower ICS3

Parameter	Comment	Min	Typical	Max	Unit
Supply voltage		115		240	Vac
Standby Power		0,15	0,3		W
Output power	Maximum on all channels	9,5 A			W
Duty cycle	Self-protection over power measurement enable by parameter setting. Alternative Max 2 minutes continuous operation followed by 18 min. stop		10		%
Type of protection			II		
Protection class			IP66		
Atmospheric pressure	(level of ≤2.000m above sea)	700		1060	hPa
Relative humidity	non-condensing	20		90	%
Color	Light grey or Black		RAL 7035 or 9005		
Storage temperature	non-condensing	-10		+50	° C
Ambient temperature	non-condensing	0		+40	° C
Storage	Do not store outside, Store in dust-free environment				
Approvals			CE, UL, CUL		

ilcoLink ICS3

Parameter	Comment	Min	Typical	Max	Unit
Standby Power		0,15	0,3		W
Input		29			Vdc
Output power	Maximum on all channels	9 A			W
Duty cycle	Self-protection over power measurement enable by parameter setting. Alternative Max 2 minutes continuous operation followed by 18 min. stop		10		%
Type of protection			II		
Protection class			IP66		
Atmospheric pressure	(level of ≤2.000m above sea)	700		1060	hPa
Relative humidity	non-condensing	20		90	%
Color	Light grey		RAL 7035		
Storage temperature	non-condensing	-10		+50	° C
Ambient temperature	non-condensing	0		+40	° C
Storage	Do not store outside, Store in dust-free environment				
Approvals			CE, UL, CUL		

ilcoEnergy ICS3

Parameter	Comment	Min	Typical	Max	Unit
Charge input			29		Vdc
Output power	Maximum on all channels	9 A			W
Output voltage			24		Vdc
Duty cycle	Self-protection over power measurement enable by parameter setting. Alternative Max 2 minutes continuous operation followed by 18 min. stop		10		%
Type of protection			II		
Protection class			IP66		
Atmospheric pressure	(level of ≤2.000m above sea)	700		1060	hPa
Relative humidity	non-condensing	20		90	%
Color	Light grey		RAL 7035		
Storage temperature	non-condensing	-10		+50	° C
Ambient temperature	non-condensing	0		+40	° C
Storage	Do not store outside, Store in dust-free environment				
Approvals			CE, UL, CUL		

ilcon GmbH

Linear Actuator Concepts
Hertzstr. 1-3
27318 Hoya
Germany

Phone +49 4251 816610-10
www.ilcon.com
info@ilcon.com

ilcon Actuator Corp.

Linear Actuator Concepts
11511 James Street
Holland, MI 49424
USA

Phone (616) 796-3235
www.ilcon.com
info@ilcon.com

For more detailed data sheets, please contact our Sales Department. We would be pleased to provide a documentation according to your product specifications. Mistakes and printing errors excepted. If you have any questions, please do not hesitate to contact us.
Dated: 06/2017

Dimensional drawing (all in mm)

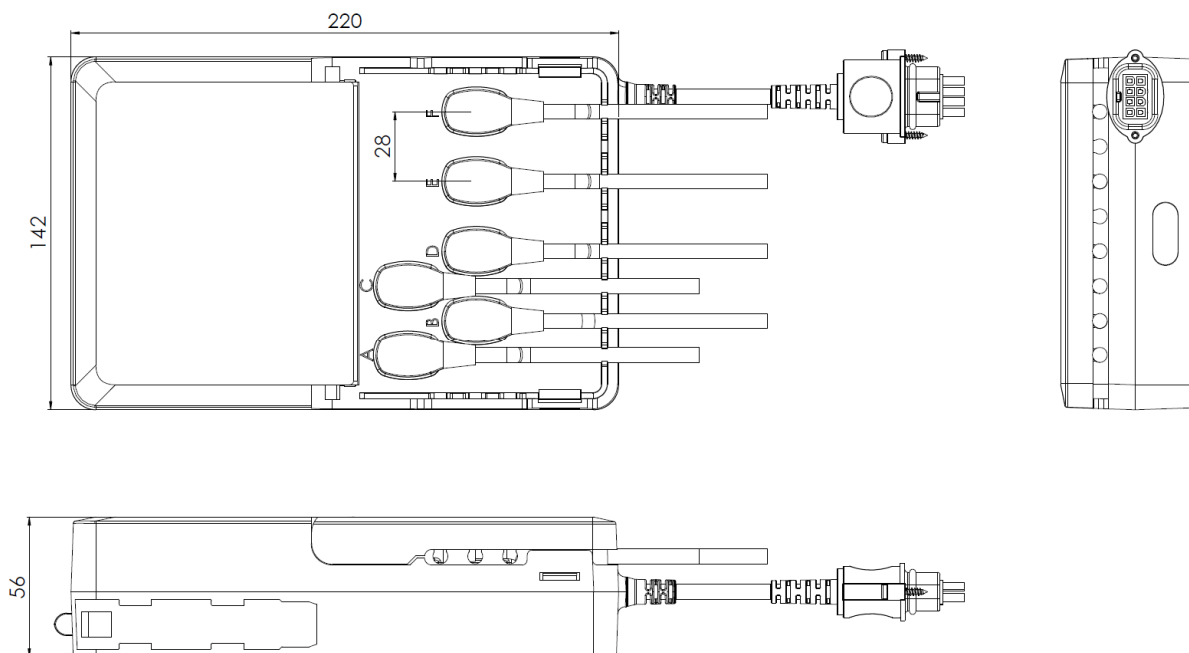


Figure 1: ilcoPower dimensions

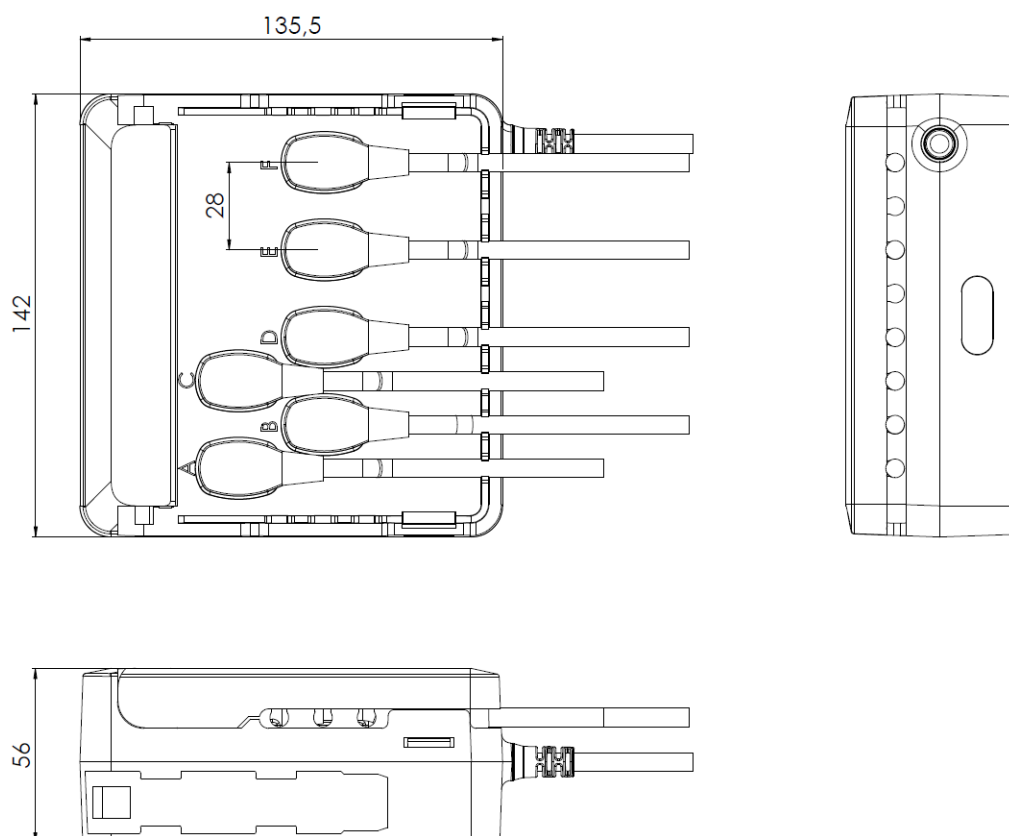


Figure 2: ilcoLink dimensions

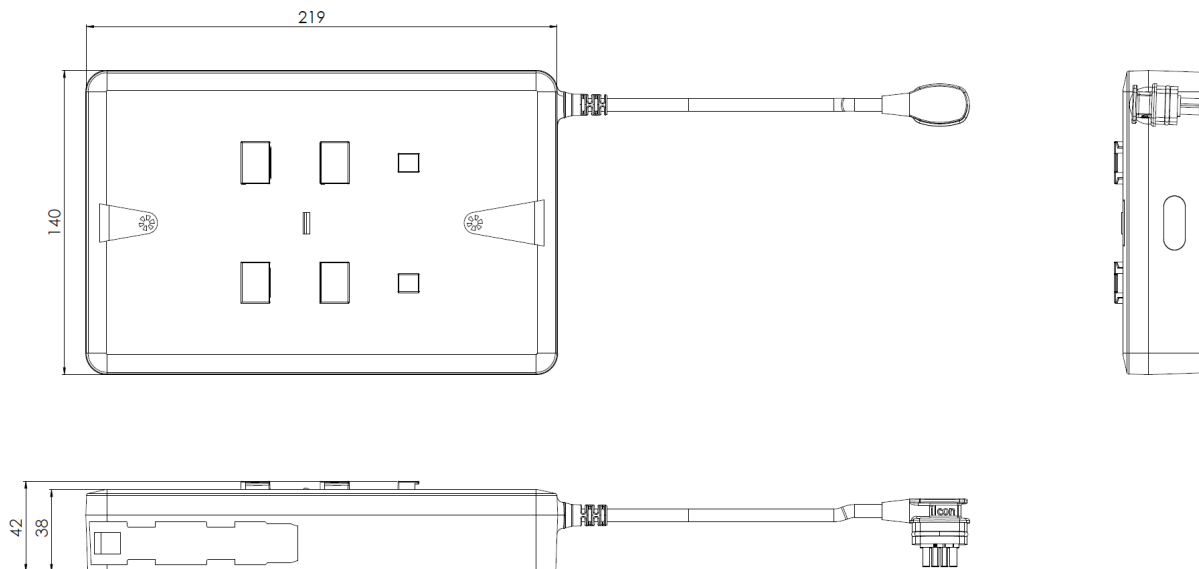
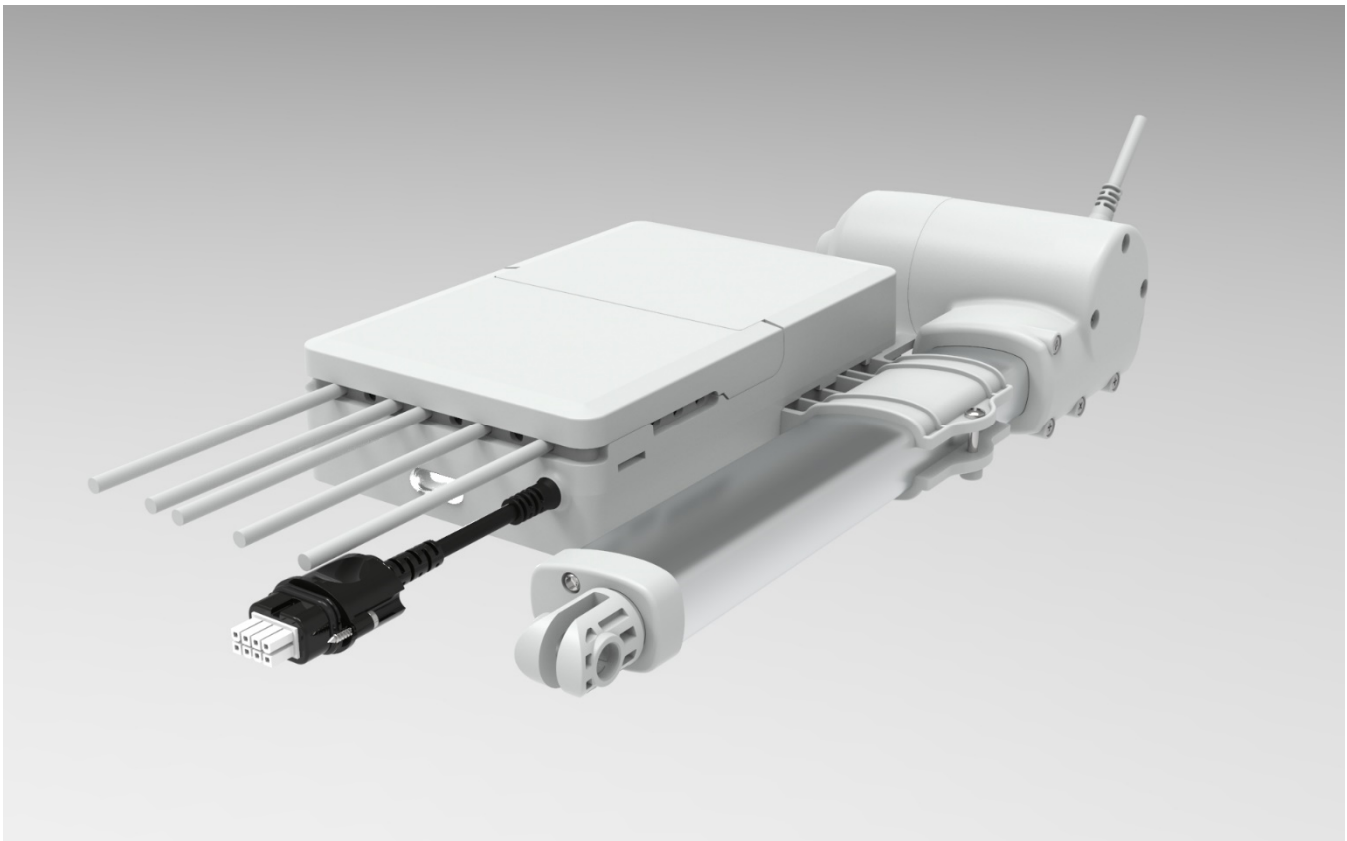
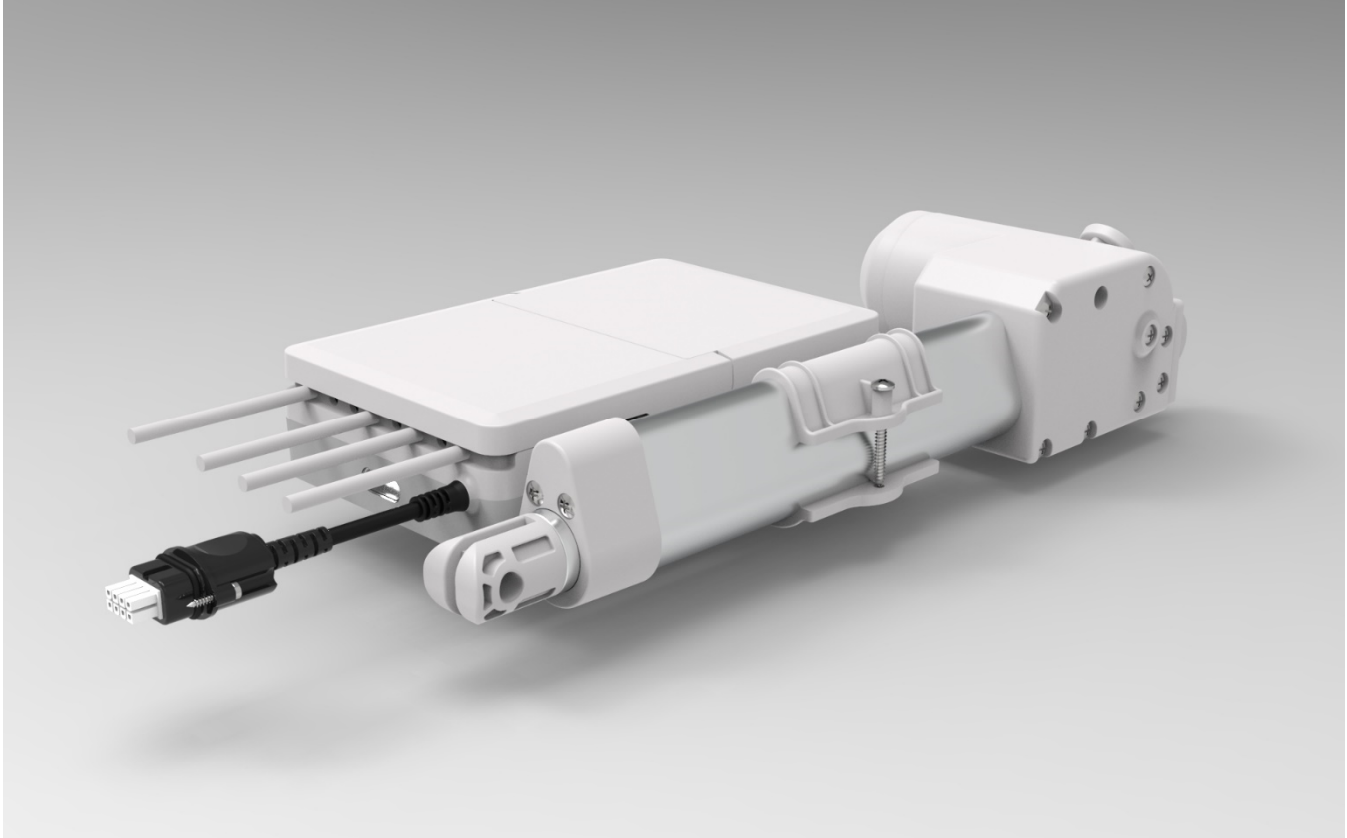


Figure 3: ilcoEnergy dimensions

Mounting options



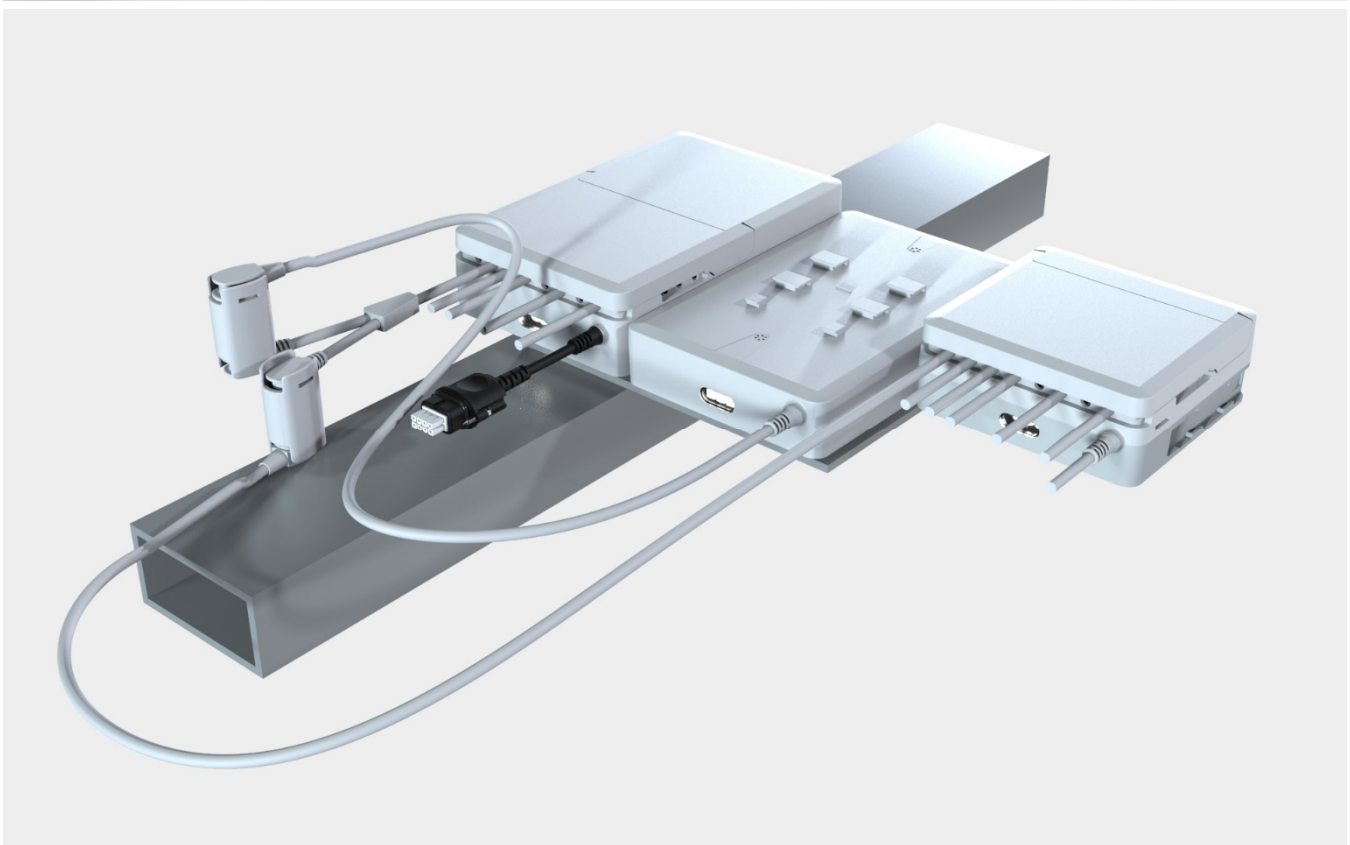
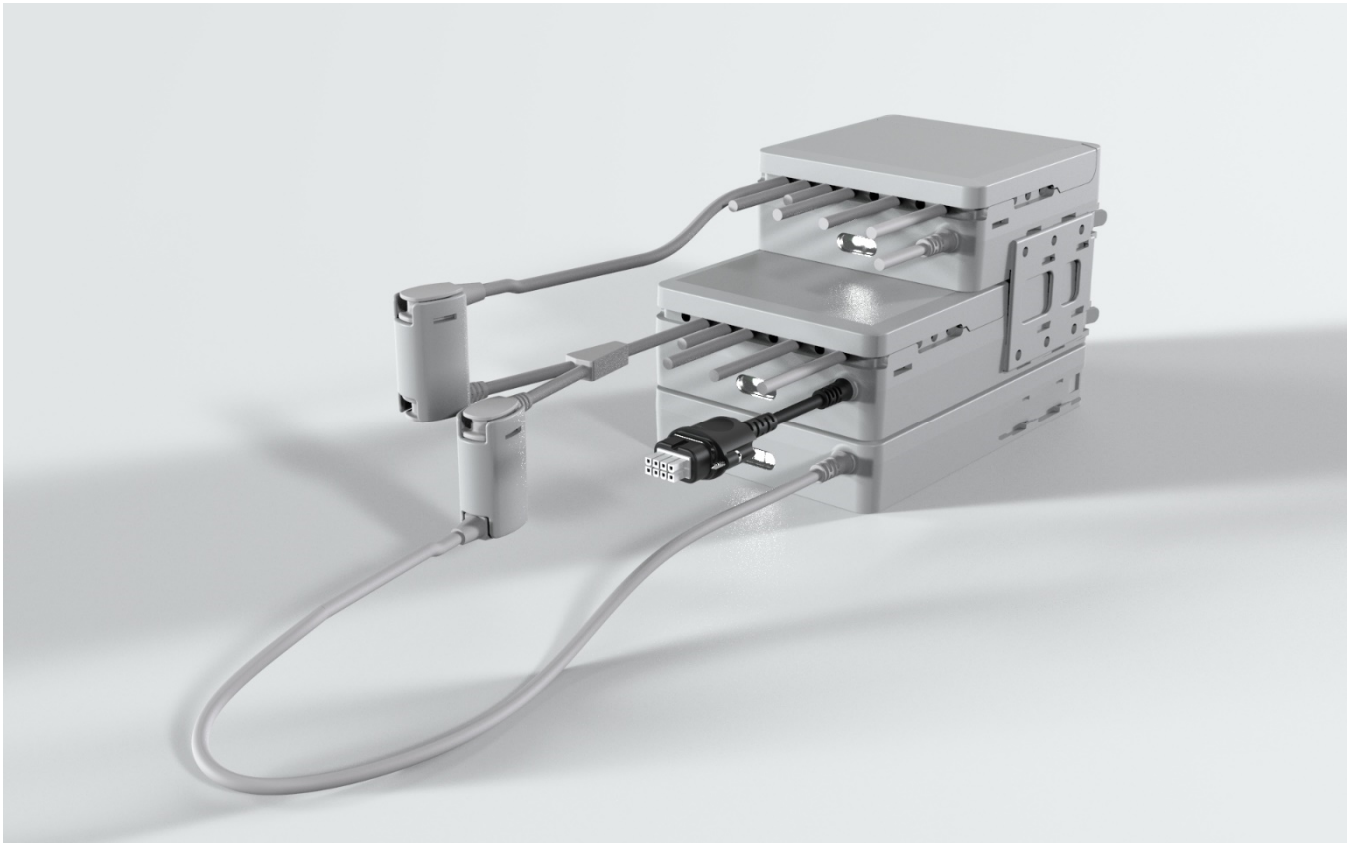
ilcon GmbH
Linear Actuator Concepts
Hertzstr. 1-3
27318 Hoya
Germany

Phone +49 4251 816610-10
www.ilcon.com
info@ilcon.com

ilcon Actuator Corp.
Linear Actuator Concepts
11511 James Street
Holland, MI 49424
USA

Phone (616) 796-3235
www.ilcon.com
info@ilcon.com

For more detailed data sheets, please contact our Sales Department. We would be pleased to provide a documentation according to your product specifications. Mistakes and printing errors excepted. If you have any questions, please do not hesitate to contact us.
Dated: 06/2017



ilcon GmbH
Linear Actuator Concepts
 Hertzstr. 1-3
 27318 Hoya
 Germany

Phone +49 4251 816610-10
www.ilcon.com
info@ilcon.com

ilcon Actuator Corp.
Linear Actuator Concepts
 11511 James Street
 Holland, MI 49424
 USA

Phone (616) 796-3235
www.ilcon.com
info@ilcon.com

For more detailed data sheets, please contact our Sales Department. We would be pleased to provide a documentation according to your product specifications. Mistakes and printing errors excepted. If you have any questions, please do not hesitate to contact us.
Dated: 06/2017

