

## Single Actuator

# ilcoDrive HZ

### Fields of application

The powerful yet quiet single actuator solution for applications in lifter and hospital environments. As the product is certified to EN 60601-1:2017 it is the perfect solution for the health care market. With the flexibility of providing a 45° 90° and 135° option on its lower forkhead the ilcoDrive HZ easily adjusts into different package situations.

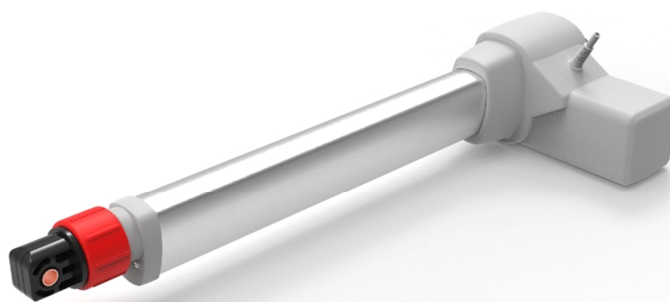
**ilcon**  
LINEAR ACTUATOR CONCEPTS

### Standard model

- Up to 8000N Push
- Up to 4000N Pull
- Build in limit switches
- Reinforced polymer housing
- Optional CPR
- Optional MNA
- Optional Only push option

### Recommended control system modules

- ilcoPower SMPS (Various options)
- IlcoEnergy Battery Systems
- IlcoPower Control Units
- ilcoControl handset (Various options)



Product details					
Parameter	Comment	Min	Typical	Max	Unit
Supply voltage			24	32	V
Power consumption	under nominal load 8000N		7A	9,5	A
Type of protection			III		
Protection class			IP X4	IP 66	
Force	Push			8000	N
Stroke length	Various options			450	mm
Connection options			2-PIN LS Plug,	Molex 8P	
Speed	without load		10,7	12,5	mm / s
	Nominal load 8000N		5,8	6,4	mm / s
	Nominal load 6000 N		7,5	10,1	mm / s
Color			Light Grey		
Duty cycle	Max 2 minutes continuous operation followed by 18 min. stop		10		%
Storage temperature	non-condensing	0		+40	° C
Ambient temperature	non-condensing	+5		+40	° C
Housing material			Polyamid V0		
Approvals			CE, UL, CUL		

#### ilcon GmbH

Linear Actuator Concepts  
Hertzstr. 1-3  
27318 Hoya  
Germany

Phone +49 4251 816610-10  
www.ilcon.com  
info@ilcon.com

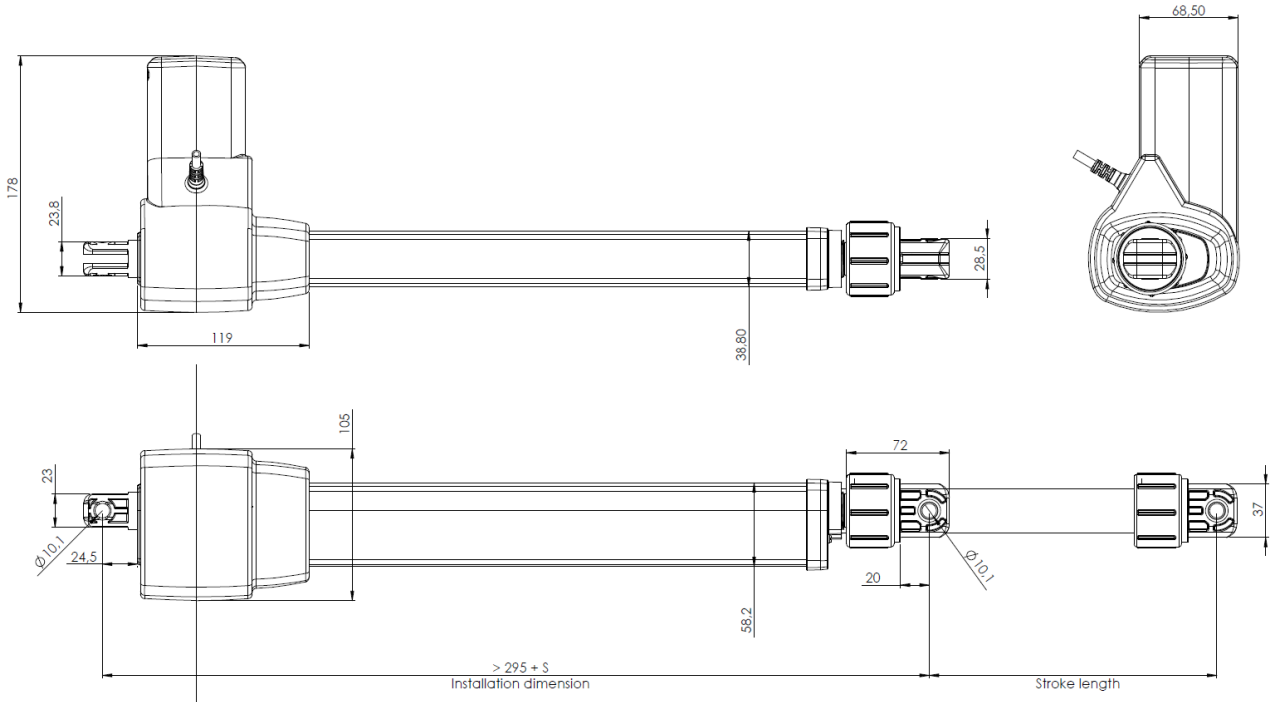
#### ilcon Actuator Corp.

Linear Actuator Concepts  
11511 James Street  
Holland, MI 49424  
USA

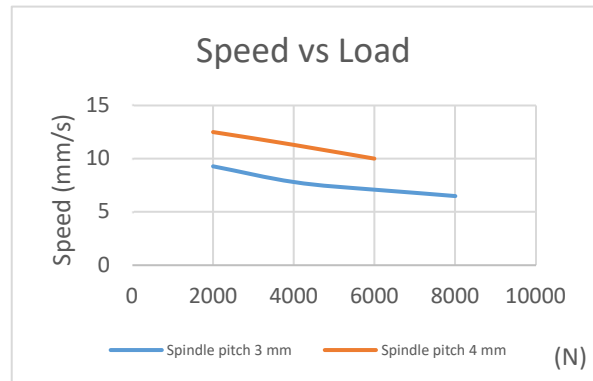
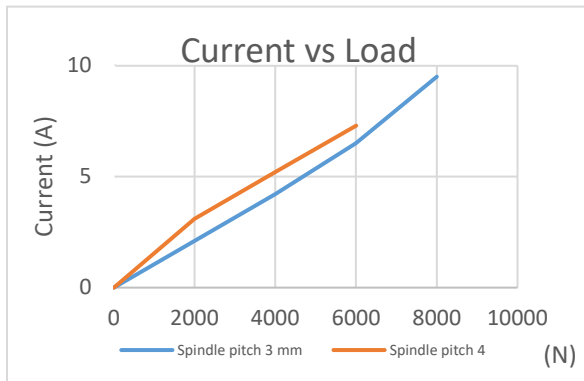
Phone (616) 796-3235  
www.ilcon.com  
info@ilcon.com

For more detailed data sheets, please contact our Sales Department. We would be pleased to provide a documentation according to your product specifications. Mistakes and printing errors excepted. If you have any questions, please do not hesitate to contact us.  
Dated: 06/2017

## Dimensional drawing



## Performance



## Order key

①	②	③	④	⑤	⑥
XX-	XX	XX	XX	XX	X
HZ-	GR-	280-	450-	24-	A -

(Example is preferred type)

①	Type of drive	HZ = ilcoDrive HZ
②	Color of housing	GR = grey RAL 7035
③	Installation dimension in mm	min. 280mm (+/- 2mm)
④	Stroke in mm	max. 450mm
⑤	Motor Voltage	18/24
⑥	Push/pull	A = push-pull B = only push

### ilcon GmbH

**Linear Actuator Concepts**  
Hertzstr. 1-3  
27318 Hoya  
Germany

Phone +49 4251 816610-10  
www.ilcon.com  
info@ilcon.com

### ilcon Actuator Corp.

**Linear Actuator Concepts**  
11511 James Street  
Holland, MI 49424  
USA

Phone (616) 796-3235  
www.ilcon.com  
info@ilcon.com

For more detailed data sheets, please contact our Sales Department. We would be pleased to provide a documentation according to your product specifications. Mistakes and printing errors excepted. If you have any questions, please do not hesitate to contact us.  
*Dated: 06/2017*