

NEW CONTROL SYSTEM

ilcoPower 4 & Plus

Product description

The ilcoPower 4 Control System and the ilcoPower Plus Connection Box are the perfect combination to control efficiently a 4-actuator care-bed system as well as to expand it with expedient accessories.

Supplied by an external switch-mode power supply, the control system is intended to control up to 4 actuators independently.

The connection box allows to flexibly extend basic actuator systems by 5 more channels. These channels can be used to connect further control devices and accessories like underbed-light, reading light, motion sensor or brake alarm.

Different mounting options offers attachment either to an actuator or to the bed structure.



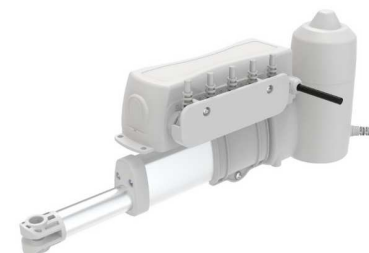
ilcon
LINEAR ACTUATOR CONCEPTS



ilcoPower 4



ilcoPower Plus



Properties

- ✓ Power supply for 110 – 220 V by an external switch-mode power supply
- ✓ Basic system with 5 channels for 4 actuators and 1 hand control
- ✓ Expandability by an ilcoPower Plus connection box
- ✓ 5 additional channels for further control devices, underbed-light, reading light, motion sensor, brake alarm, usb port
- ✓ All components compliant with IEC 60601-1 (edition 3.1) and water resistant compliant with IPx6 (UL certified)
- ✓ Company certified by EN ISO 9001:2015, 14001:2015, 13485:2016

